

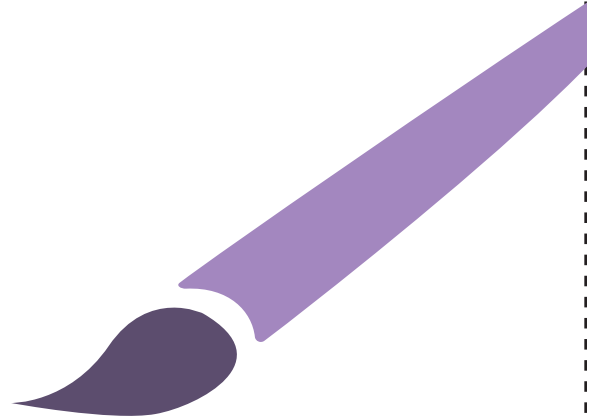
Directions:

Print out two copies of the character strength cards. Tape one set around the classroom and keep one set for discussion. Review each strength and description with students. Instruct students that when you say go, they will have 30 seconds to move around the room and find the strength with which they most closely identify. Encourage them to go to the strength they feel and not where their friends go. After students have located their strength discuss why they picked the strength they chose.

Creative

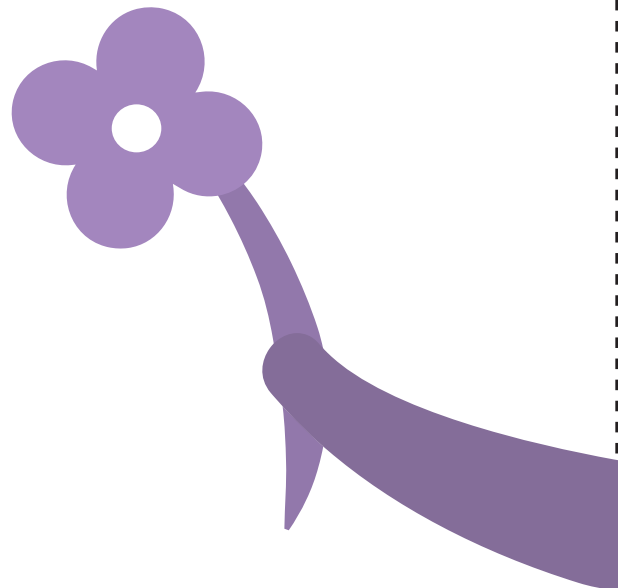
You are great at thinking of new ways of doing things.

You are good at solving problems.



Caring

You are kind to others and go out of your way to help them.



Humorous

You like to laugh and make others laugh.



Generous

You like to share and give to others.



Brave

You are strong and courageous.

You deal with challenges and take on difficult problems.



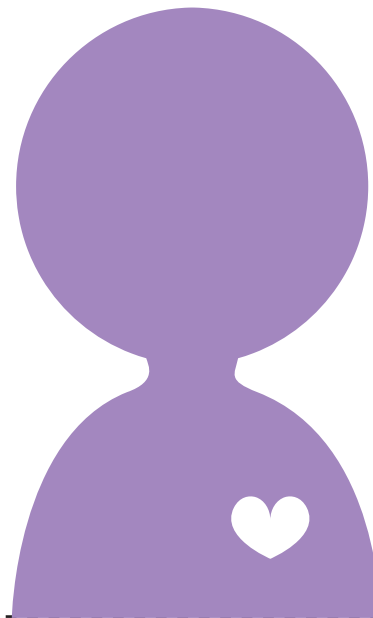
Curious

You are interested and curious about learning new things.



Honest

You are honest. You speak the truth.



Determined

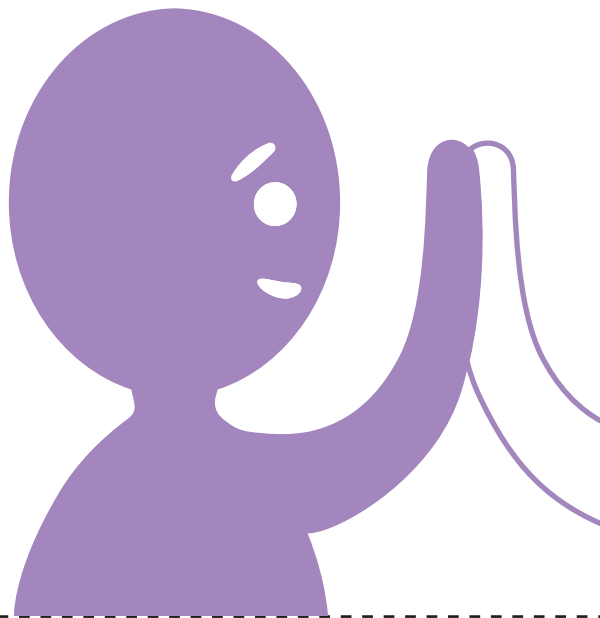
**You never stop trying.
You always stick with it.**



Cooperative

**You are cooperative and
work well with others.**

You enjoy teamwork.



Hard Working

**You give your best effort and work
hard at everything you do.**



Dependable

You are dependable and can be trusted.

Others can count on you.

